

#4 WORLD-CLASS EDUCATION & A YOUNG TALENT POOL

The median age in Surrey City Centre is below 40, the youngest in Greater Vancouver. With SFU, KPU campus and Surrey Memorial (UBC's teaching hospital), there is no shortage of highly trained local talents to fill the demanding and specialized tech jobs.

SFU's new Sustainable Energy and Environmental Engineering building will be a fundamental step in Surrey's aspiration to become a technology hub while adding to the dynamism of the city. Kwantlen Polytechnic University (KPU) is also expanding into Surrey City Centre with a new 30,000 sq. ft. education facility, envisioned to facilitate upper-level business courses and other world-class post-graduate programs in the region.



#5 CRITICAL MASS IS REACHED FOR AN EXPONENTIAL GROWTH

It's all taking place in the City of Surrey, which in the past decade has not only grown to become the second-largest city by population after Vancouver, but has also seen billions invested in record-breaking public and private infrastructure upgrades, as well as the launch of Innovation Boulevard, a major initiative that works with health-tech companies at all stages of development.

This is a city that's also been showered with praise by everyone from business and community leaders to the Intelligent Community Forum, a global think tank that recently named Surrey among the Top 7 intelligent communities in the world.



PARKGEORGE.COM

Concord Pacific Surrey Presentation Centre
9908 King George Blvd, Surrey
604-583-9866

The developer reserves the right to make modifications and changes to floor plan layouts should they be necessary. Any measurements provided are approximate and for illustrative purposes only. All illustrations reflect the artist's interpretation of the project and do not take into account the neighbouring buildings, physical structures, street and landscapes. This is not an offering for sale. Any such offer may only be made with the applicable Disclosure Statement and Agreement of Purchase and Sale. Concord Park George Limited Partnership E. & O.E.

CONCORD
PACIFIC



PARK George

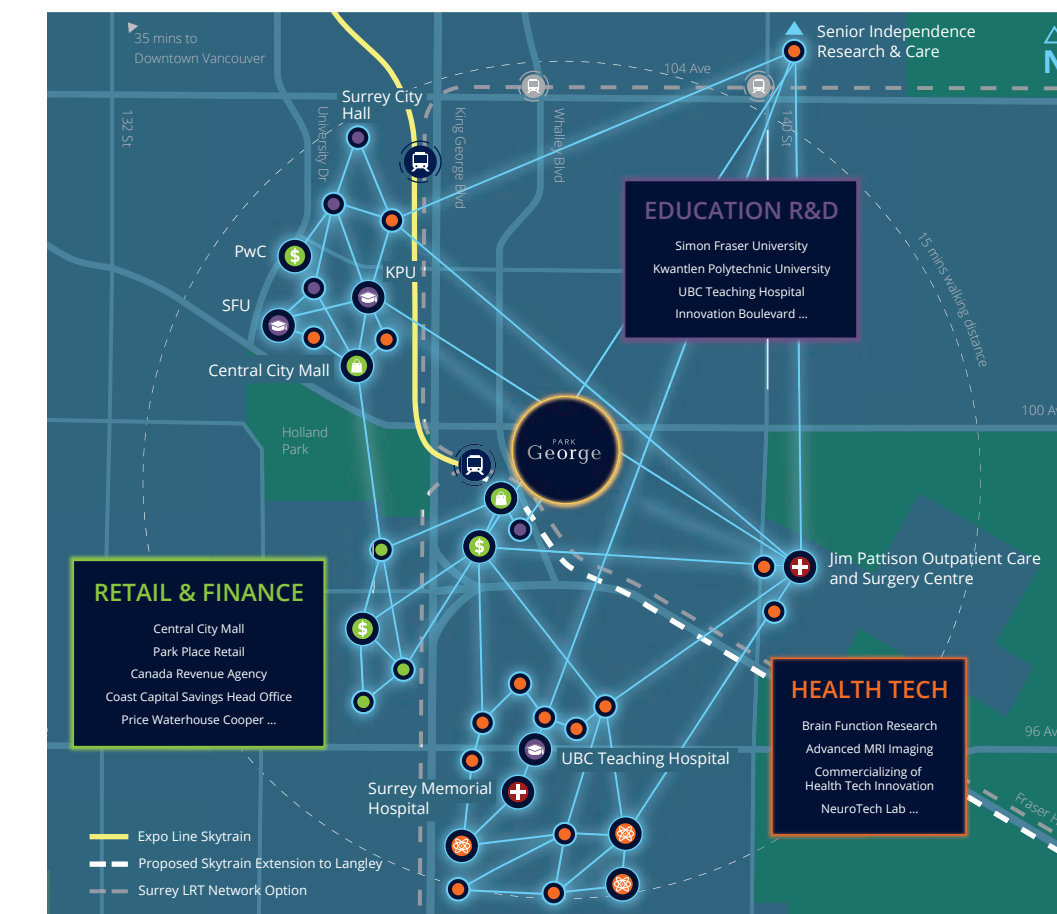
CONNECTED TO AN EXPANDING FUTURE

WHY HERE? WHY NOW?

TOP REASONS TO INVEST IN PARK GEORGE

#1 LAST PHASE OF THE BEST COMMUNITY

Future owners of PARK GEORGE will have the privilege to enjoy a newly maturing Park Place Community with everyday conveniences & state-of-the-art facilities merely steps away. 85% of this sought-after community is practically sold out with the majority completed and occupied.



#2 HEALTH TECH IS THE KEY ACCELERATOR

Health care is the single largest budget item for every province in Canada. This expenditure could reach \$8.7 trillion at a global level by 2020, attracting much attention from the brightest minds and venture capital. The health-tech segment is Surrey's forte in the tech scene with scope for innovation and technological breakthrough ranging from neuroscience to VR & robotics, health data delivery, and telemedicine.

Innovation Boulevard, a concerted partnership by the City of Surrey, Fraser Health & SFU, has helped some 50 highly specialized health tech companies in the City Centre and the commercialization of 6 products with possible world-wide applications. Surrey has become the top health-tech hub in Western Canada and continues to attract the young and brightest in the region and around the globe to live and work.

#3 LARGEST TRANSPORTATION HUB

The existing Skytrain network, bus exchange, as well as the proposed LRT or Skytrain extension into Langley alone will allow Surrey City Centre to continuously thrive on 360 degrees connectivity. Together with the largest port in Canada, 10-lane Port Mann Bridge, major highway improvements and its central location, Surrey is the regional centre of Greater Vancouver.





AMENITIES BUILT FOR THE MILLENNIAL LIFESTYLE

Work is fun and productive at The Circle. This is a place designed with flex-space and flex-time in mind for a perfect live-work balanced life.

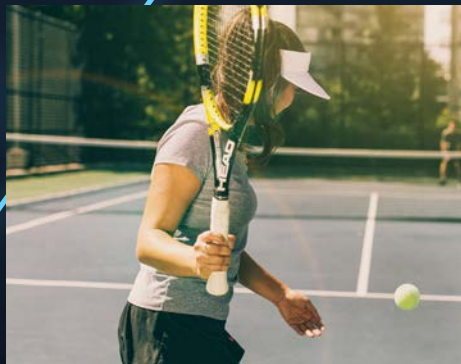
Recognizing that connectivity is vital for highly educated, tech savvy millennials, Park George will take on a "live connected" concept that will be seen throughout its towers — starting with the "Campus Work Lounge", which boasts semi-private workspace, a private video conference room, and a wet bar. There is even a pet grooming room for your furry friend.

The space will open up to an outdoor barbecue terrace for entertaining, virtual spin and yoga studio as well as a sports lounge.

To revitalize and rejuvenate, the indoor swimming pool, spa, and outdoor hot tub theatre will not disappoint.

The well-appointed entertainment lounge is equipped with a catering kitchen and karaoke for you to throw a memorable party for your friends.

At The Circle, you decide on when and how to connect to the world around you in every aspect.



GET CONNECTED TO CLUB PA

In case if you still want more options to relax and entertain, take advantage of the resort-style amenities such as an outdoor swimming pool and tennis court at the adjacent Park Avenue development.

SIMPLY THE BEST AMENITIES IN TOWN

Between The Circle and Club PA, residents at Park George will have the privilege of enjoying 30,000 sq. ft. of luxurious indoor amenities and 80,000 sq. ft. of beautifully landscaped outdoor facilities. This is condo living at its best.

Wi-fi in Common Areas



NFC Building Entry



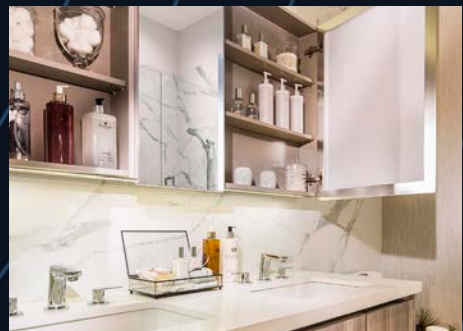
LIVE CONNECTED



YEAR ROUND COMFORT AT HOME

Your home is your sanctuary. Every suite at Park George is a display of timeless elegance. Tastefully designed kitchens with European appliances, custom wood-grain laminate cabinetry, ample shelving, and custom-design smart storage solutions.

8'8" ceilings, central heating and cooling systems, as well as smart thermostats all come standard in every home.



Sports Social Lounge



Outdoor Hot Tub Theatre



Virtual Spin Studio



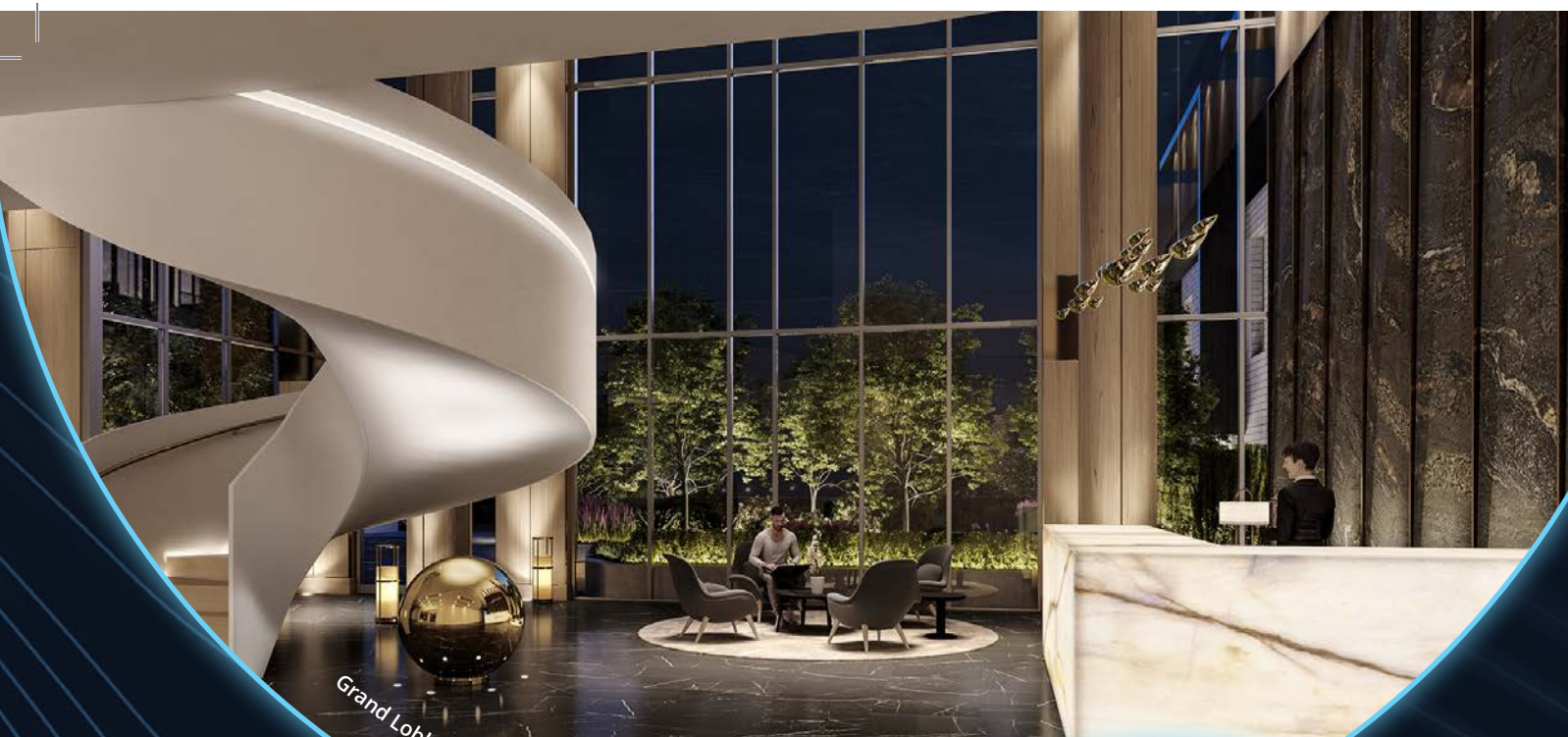
Indoor Swimming Pool, Spa & Sunbathing Deck



Video Conferencing Room



Campus Work Lounge



Grand Lobby With 24-hour Concierge Services