



6 Bed



6 Bath



3 Kitchen



1 Recreation



4 Parking



3,929 sq.ft.



6,600 sq.ft.



2018 REBGV Top 1% Medallion Team*
2018 大温前Top 1%金牌地产团队*

778.308.5077

Multiple Realty Ltd.
万宝地产 Since 1982
110-9780 Cambie Road, Richmond BC V6X 1K4



Terry Lin

Personal Real Estate Corporation

林晨

Cynthia Sun

Personal Real Estate Corporation

孙若熙

Nina Chou

Personal Real Estate Corporation

周钰玲

Jeremy Hsu

Personal Real Estate Corporation

徐權輝

Michelle Wang

Personal Real Estate Corporation

王米

Ernest Chi

Personal Real Estate Corporation

池雨天

Garry Nip

Personal Real Estate Corporation

聶海寧

INTERIOR VIEW



Jeremy Hsu PREC* | 徐權輝個人地產公司 | M.B.A.
604.617.2230 | jeremy@cawingo.com



2018 Top 1% Medallion Club Team Leader | 2017 Top10% Medallion Club Team Leader
2015~2016 Medallion Club Member | 2018 Multiple Realty Team Award & Master Award
2015 Multiple Realty Platinum Award | 2016/2017 Multiple Realty Diamond Award

*Personal Real Estate Corporation | This Communication is not intended to cause or induce breach of an existing Agency Agreement

4146 Gilpin Crescent Burnaby



GROSS INTERNAL AREA

MAIN FLOOR : 1,723 SQ FT

UPPER FLOOR: 836 SQ FT

BASMENT: 1,370 SQ FT

TOTAL: 3,929 sq ft

AUXILIARY AREA

GARAGE : 440 SQ FT

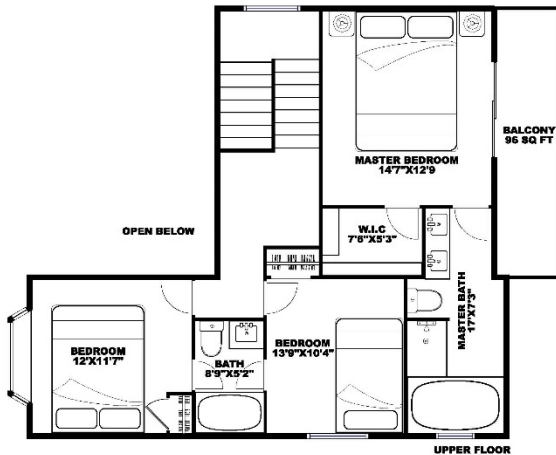
BALCONY: 96 SQ FT

SIZES AND DIMENSIONS ARE APPROXIMATE,

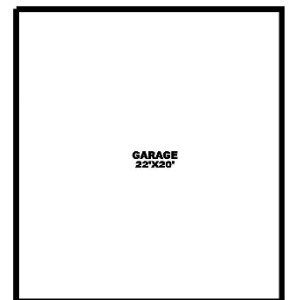
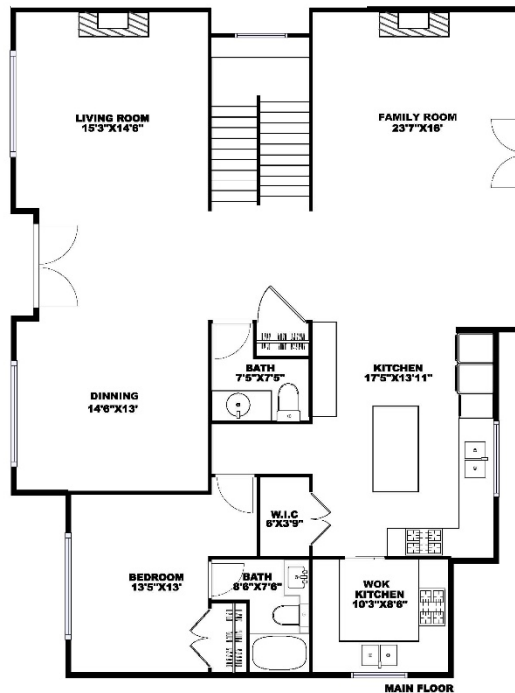
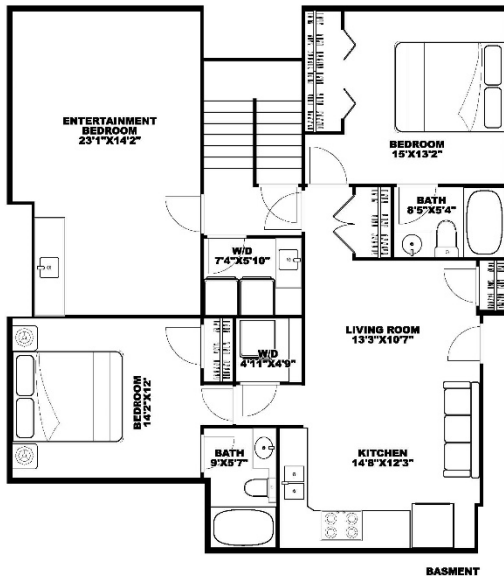
ACTUAL MAY VARY.

Measured on: December 17, 2019

PIN ARCHI
604-828-1336
www.pinarchi.com



Scan Barcode
3D Virtual Tour



Disclaimer (IMPORTANT)

1. This Floor Plan is not suitable for a architectural / construction use.
2. All measurement are approximate and to be verified by the buyer.



Emma Lei


雷泽雨 | 大温地产经纪

778.892.8229 | emmalei8229@gmail.com



4146 GILPIN CRESCENT, BURNABY (GARDEN VILLAGE) V5G 2K2

Multiple Realty Ltd. | Since 1982 | #110 – 9780 Cambie Road, Richmond BC V6X 1K4 | T: 604.273.8555 | F: 604.273.4882

<div>Active</div> <div>R2424746</div> <div>Board: V</div> <div>House/Single Family</div>			<div>4146 GILPIN CRESCENT</div> <div>Burnaby South</div> <div>Garden Village</div> <div>V5G 2K2</div>			<div>Residential Detached</div> <div>\$1,999,000 (LP)</div> <div>(SP)</div>		
			<div>Sold Date:</div> <div>Meas. Type: Feet</div> <div>Depth / Size: 110</div> <div>Lot Area (sq.ft.): 6,600.00</div> <div>Flood Plain:</div> <div>Rear Yard Exp: Southwest</div> <div>Council Apprv?:</div> <div>If new, GST/HST inc?:</div>			<div>Frontage (feet): 60.00</div> <div>Bedrooms: 6</div> <div>Bathrooms: 6</div> <div>Full Baths: 5</div> <div>Half Baths: 1</div> <div>Original Price: \$1,999,000</div> <div>Approx. Year Built: 2016</div> <div>Age: 3</div> <div>Zoning: R10</div> <div>Gross Taxes: \$9,147.51</div> <div>For Tax Year: 2019</div> <div>Tax Inc. Utilities?: No</div> <div>P.I.D.: 001-192-213</div> <div>Tour: Virtual Tour URL</div>		
			<div>View: Yes: MOUNTAIN & PARK VIEW</div> <div>Complex / Subdiv: GARDEN VILLAGE</div> <div>Services Connected: Community, Electricity, Natural Gas, Water</div> <div>Sewer Type: City/Municipal</div>					
<div>Style of Home: 2 Storey w/Bsmt.</div> <div>Construction: Frame - Wood</div> <div>Exterior: Stone, Vinyl, Wood</div> <div>Foundation: Concrete Perimeter</div> <div>Rain Screen:</div> <div>Renovations:</div> <div># of Fireplaces: 2</div> <div>Fireplace Fuel: Natural Gas</div> <div>Water Supply: City/Municipal</div> <div>Fuel/Heating: Natural Gas, Radiant</div> <div>Outdoor Area: Balcny(s) Patio(s) Dck(s), Fenced Yard</div> <div>Type of Roof: Asphalt</div>			<div>Reno. Year:</div> <div>R.I. Plumbing:</div> <div>R.I. Fireplaces:</div> <div>Metered Water:</div>			<div>Total Parking: 4 Covered Parking: 2 Parking Access: Rear</div> <div>Parking: Add. Parking Avail., Garage; Double</div> <div>Dist. to Public Transit: CLOSE</div> <div>Dist. to School Bus: CLOSE</div> <div>Title to Land: Freehold NonStrata</div> <div>Property Disc.: Yes</div> <div>PAD Rental:</div> <div>Fixtures Leased: No :</div> <div>Fixtures Rmvd: No :</div> <div>Floor Finish: Hardwood, Mixed, Tile</div>		
<div>Legal: LOT 5, BLOCK 5, PLAN NWP14146, DISTRICT LOT 34, GROUP 1, NEW WESTMINSTER LAND DISTRICT</div>								
<div>Amenities:</div>								
<div>Site Influences: Central Location, Private Yard, Recreation Nearby, Shopping Nearby</div> <div>Features: Air Conditioning, ClthWsh/Dryr/Frdg/Stve/DW, Drapes/Window Coverings, Garage Door Opener, Heat Recov. Vent., Microwave,</div>								
Floor	Type	Dimensions	Floor	Type	Dimensions	Floor	Type	Dimensions
Main	Living Room	15'3 x 14'6	Above	Bedroom	12' x 11'7			x
Main	Dining Room	14'6 x 13'	Bsmt	Recreation	23'1 x 14'2			x
Main	Family Room	23'7 x 16'	Bsmt	Living Room	13'3 x 10'7			x
Main	Kitchen	17'5 x 13'11	Bsmt	Kitchen	14'8 x 12'3			x
Main	Wok Kitchen	10'3 x 8'6	Bsmt	Bedroom	14'2 x 12'			x
Main	Bedroom	13'5 x 13'	Bsmt	Bedroom	15' x 13'2			x
Main	Pantry	6' x 3'9	Bsmt	Laundry	7'4 x 5'10			x
Above	Master Bedroom	14'7 x 12'9	Bsmt	Laundry	4'11 x 4'9			x
Above	Walk-In Closet	7'6 x 5'3			x			x
Above	Bedroom	13'9 x 10'4			x			x
Finished Floor (Main): 1,723		# of Rooms:18	Bath	Floor	# of Pieces	Ensuite?	Outbuildings	
Finished Floor (Above): 836		# of Kitchens: 3	1	Main	3	Yes	Barn:	
Finished Floor (Below): 0		# of Levels: 3	2	Main	2	No	Workshop/Shed:	
Finished Floor (Basement): 1,370		Suite:	3	Above	4	Yes	Pool:	
Finished Floor (Total): 3,929 sq. ft.		Crawl/Bsmt. Height:	4	Above	3	Yes	Garage Sz:	
Unfinished Floor: 0		Beds in Basement: 2 Beds not in Basement:4	5	Bsmt	3	Yes	Grg Dr Ht:	
Grand Total: 3,929 sq. ft.		Basement: Separate Entry	6	Bsmt	3	Yes		
			7					
			8					
Listing Broker(s): Multiple Realty Ltd.			Multiple Realty Ltd.					
<div>Most desired Luxury Single House located at Garden Village, 6 bed 6 bath plus 1 recreation/media room almost 4,000 sq.ft. living space. Custom built home with beautiful mountain view. Basketball court, swimming pool and playground, and greenbelt just right at front. High end Thermador appliances and well functioning floor plan, A/C, HRV, radiant floor heating, 10' ceilings, security system and much more. Two bedrooms separate entrance at basement, with private huge kitchen and laundry. 5 mins to Metropolis and Crystal Mall. Close to BCIT and Moscrop secondary school, Chaffey-Burke Elementary and Cascade Heights Elementary are well within walking distance. 2-5-10 new home warranty available.</div>								